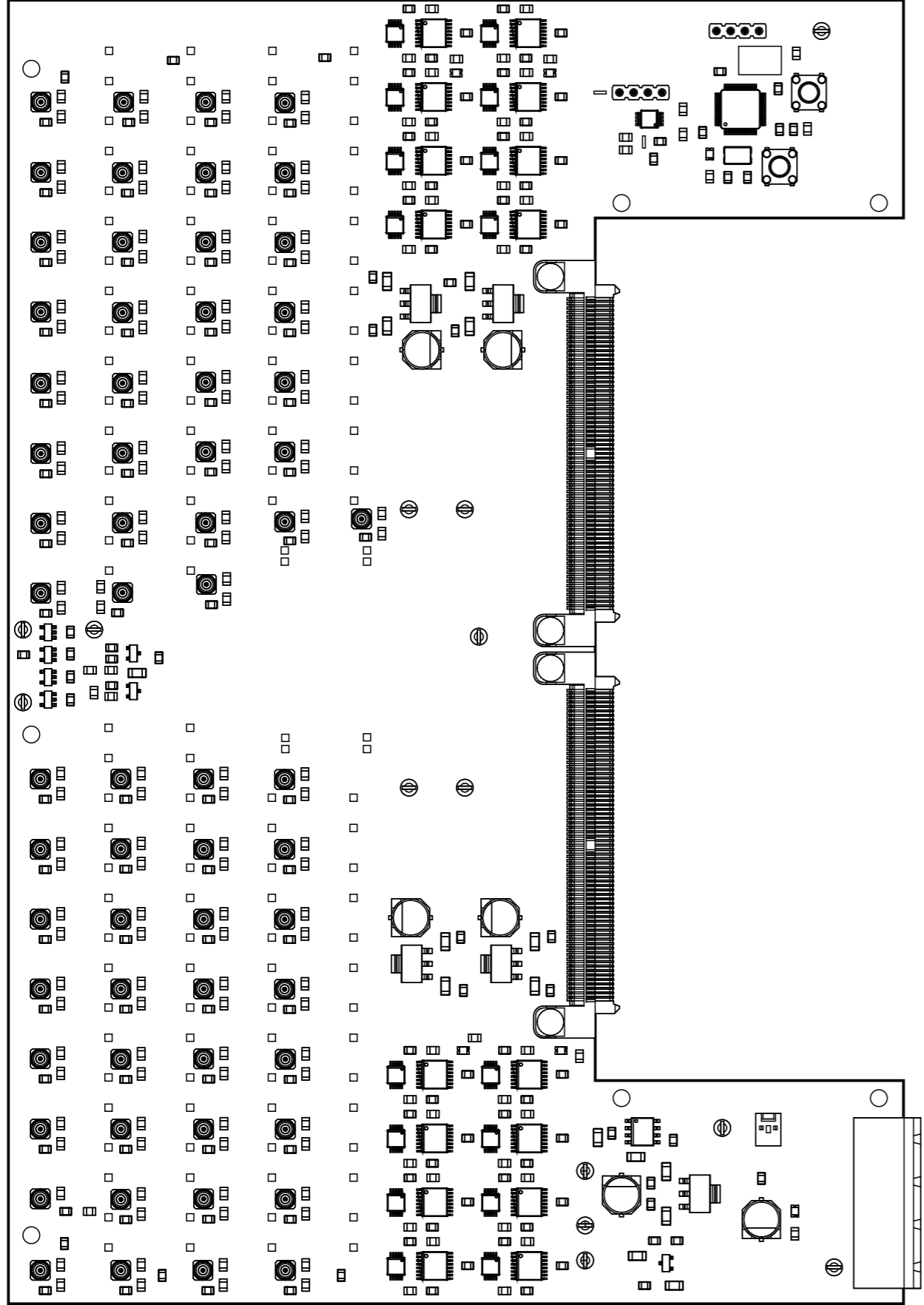
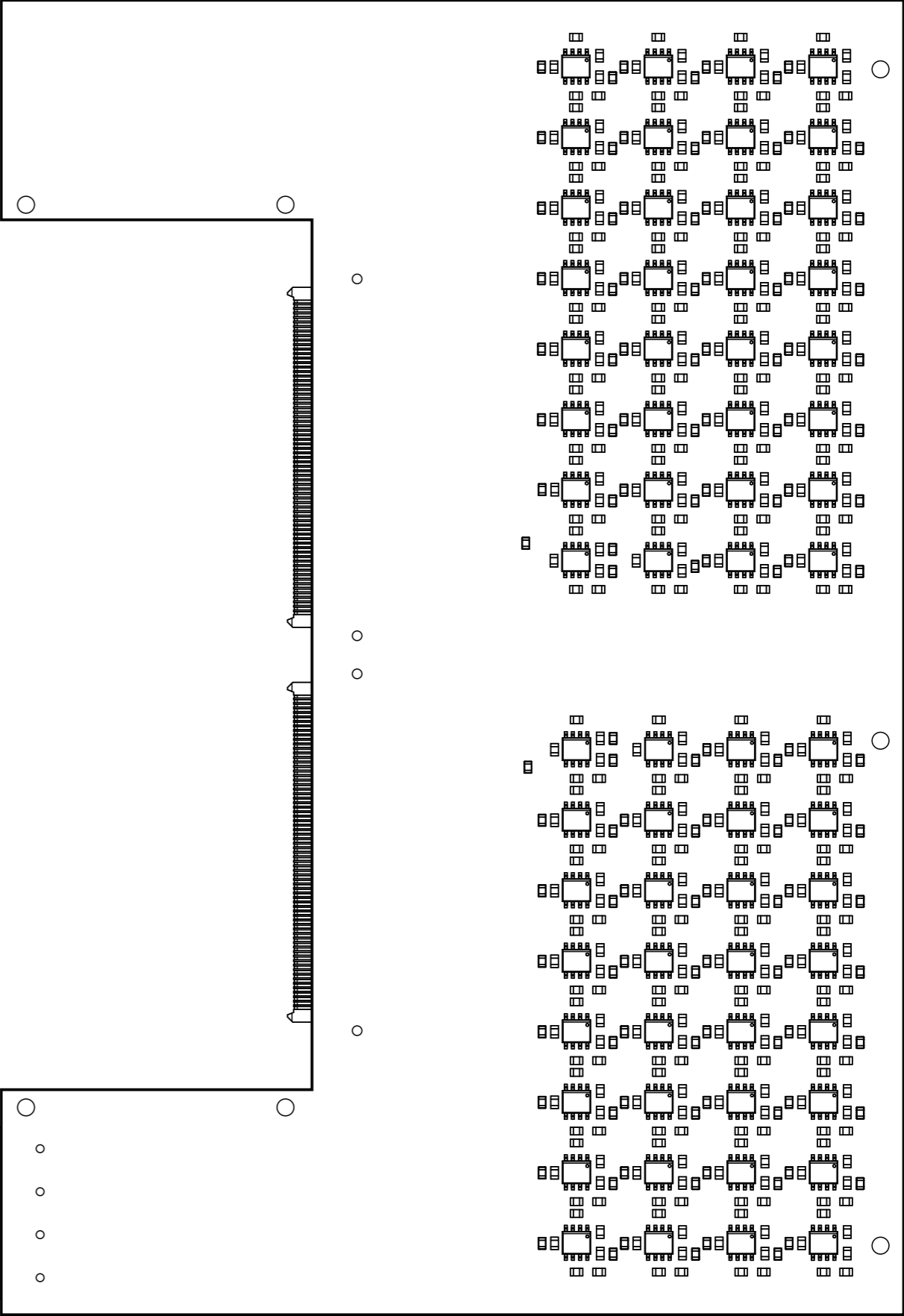


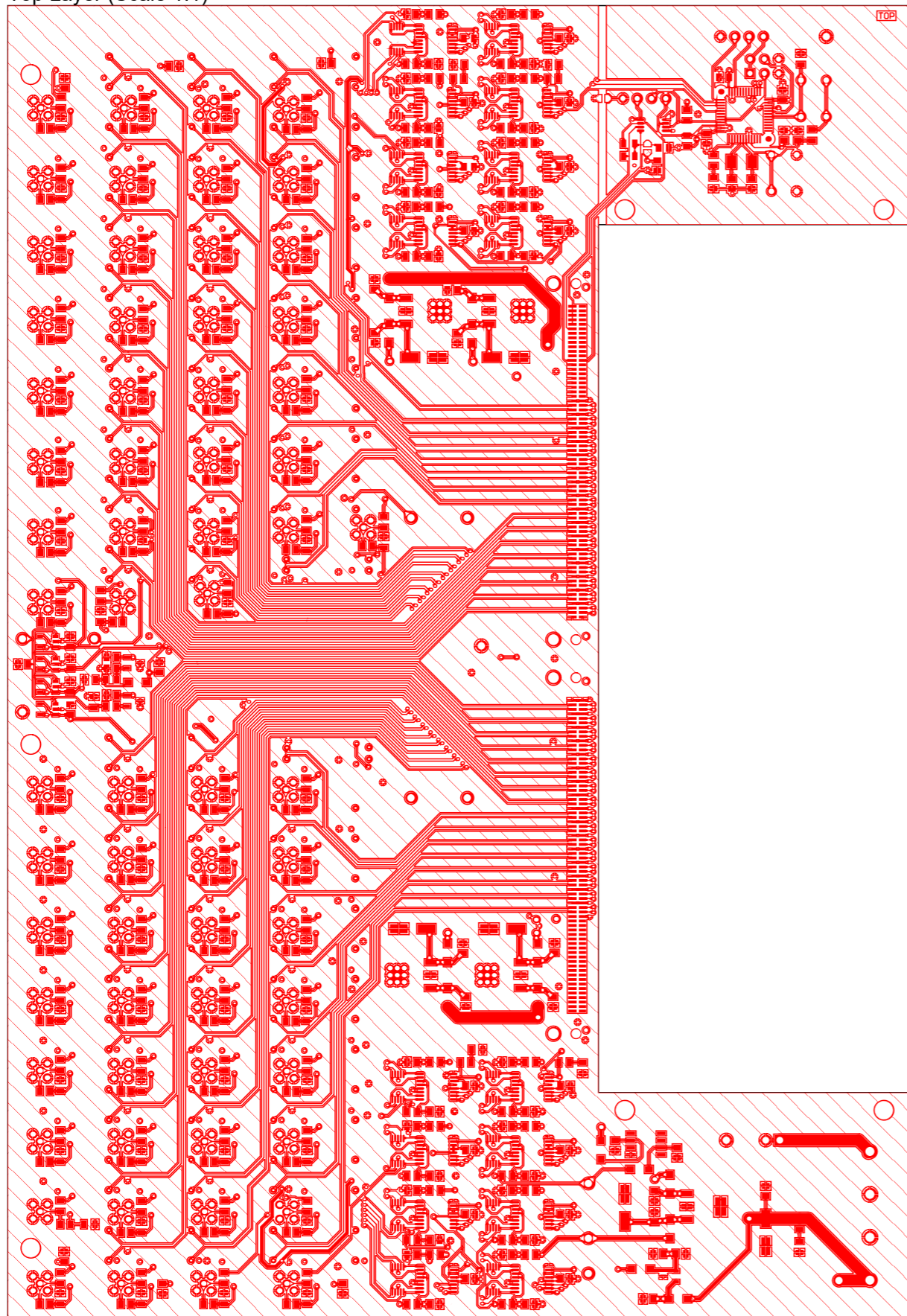
View from Top side (Scale 1:1)



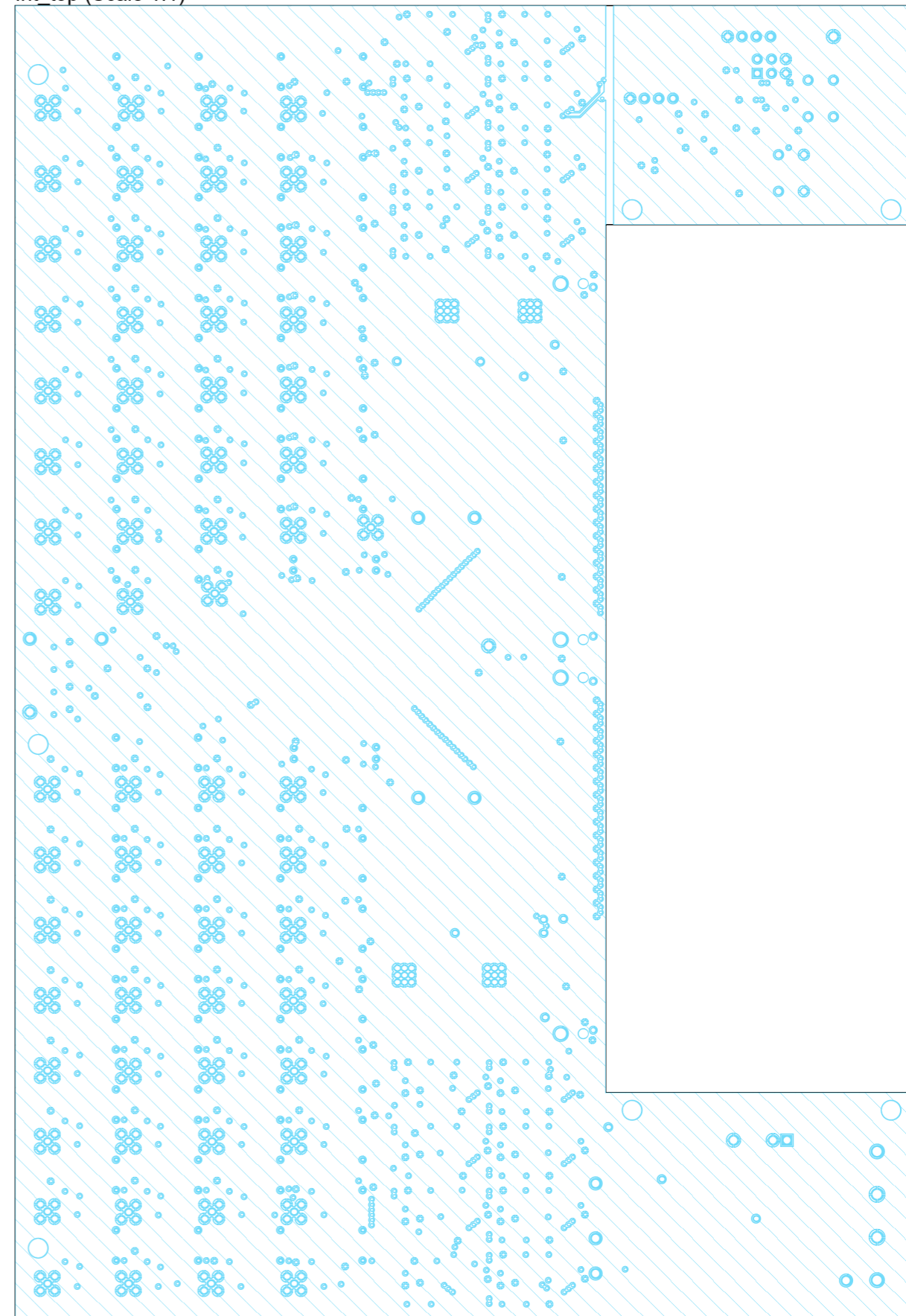
View from Bottom side (Scale 1:1)



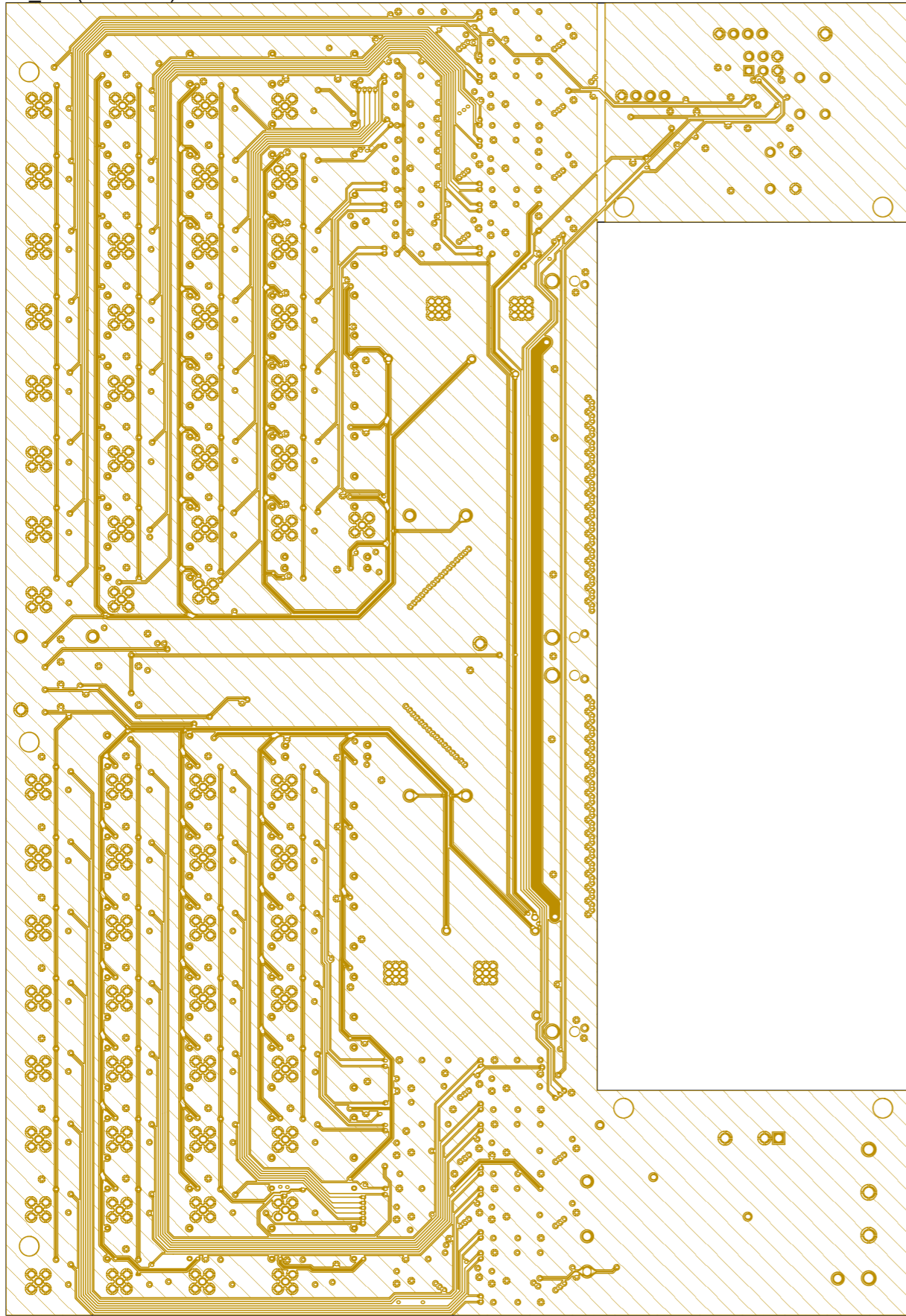
Top Layer (Scale 1:1)



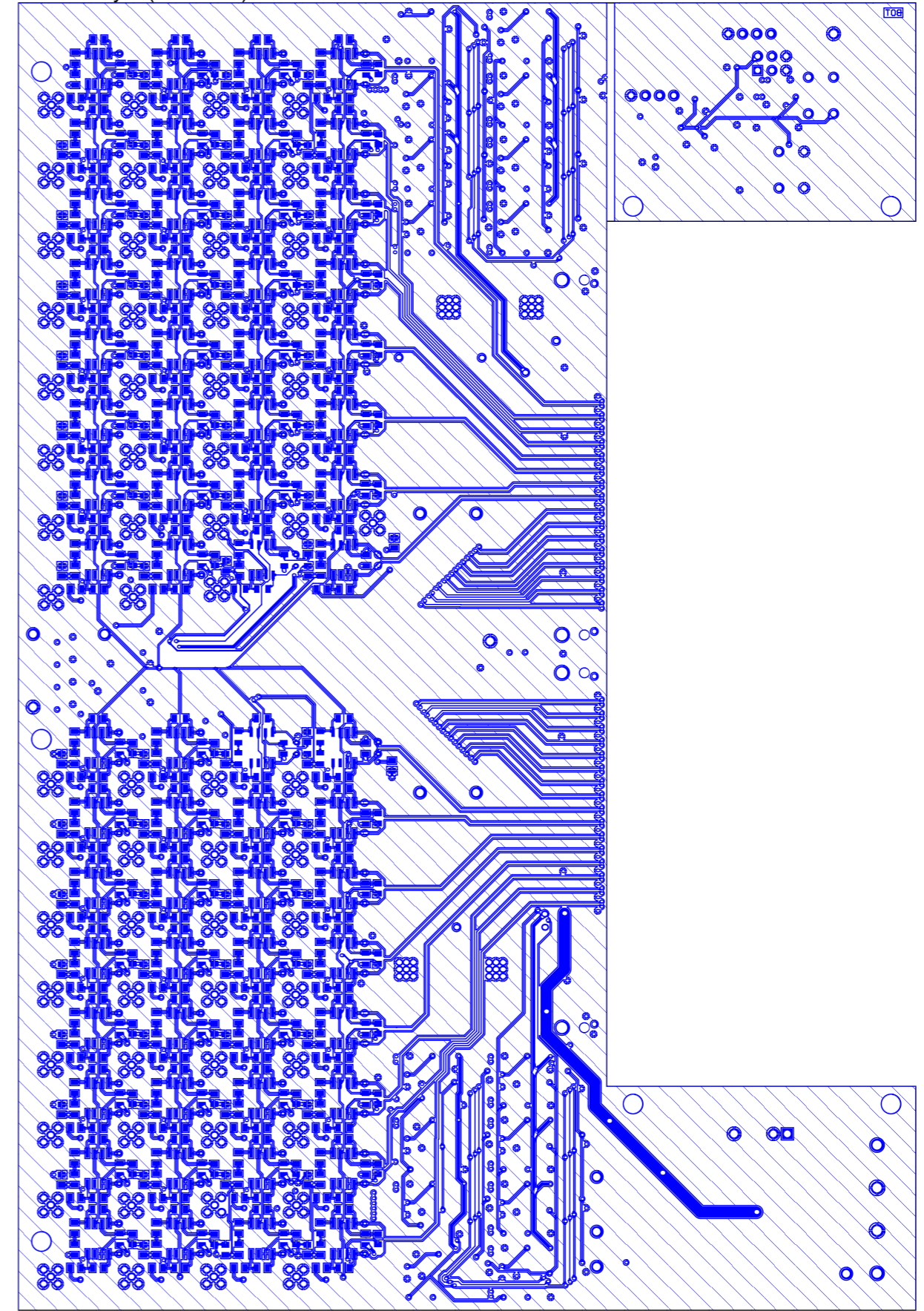
Int_top (Scale 1:1)



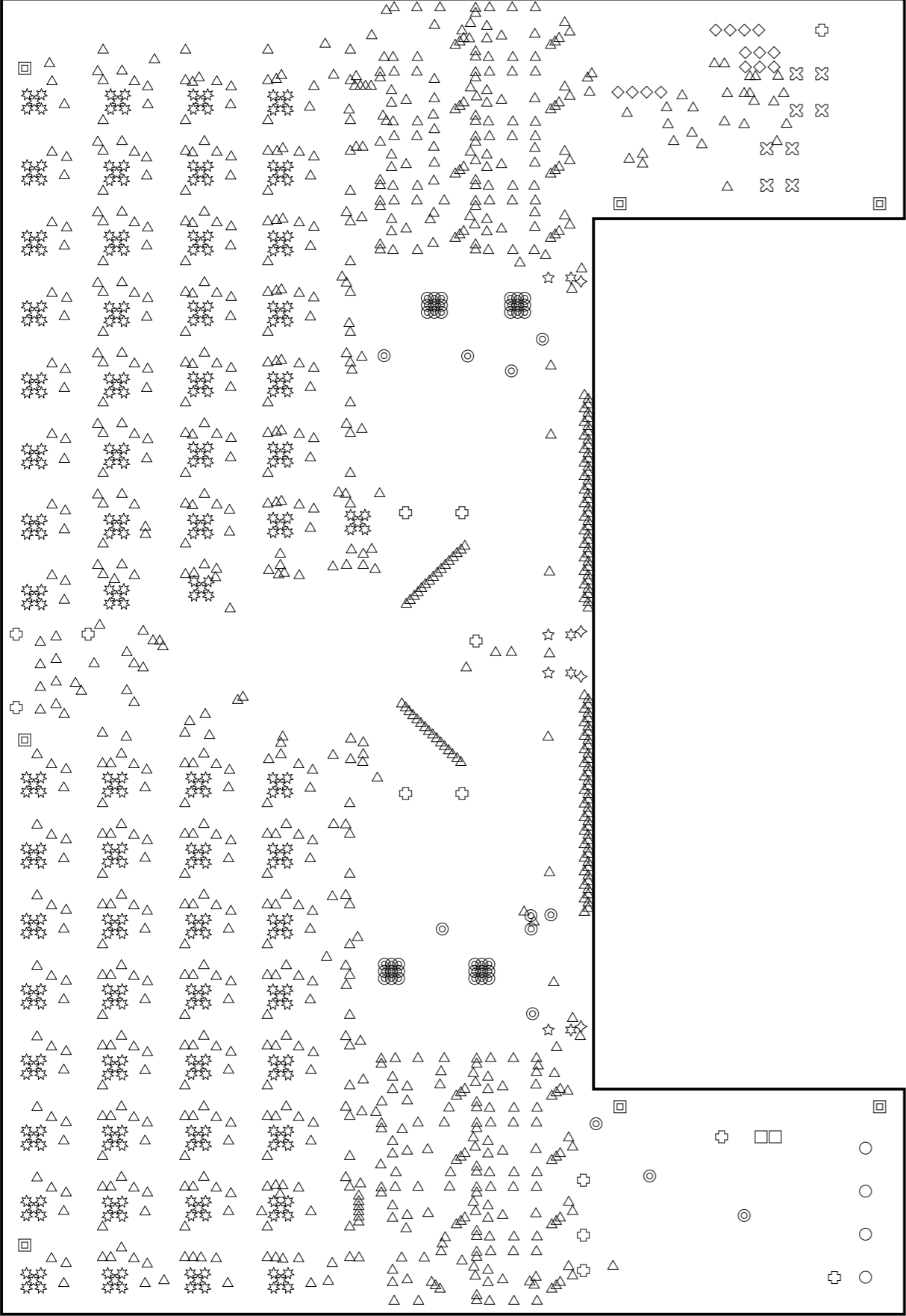
Int_bot (Scale 1:1)



Bottom Layer (Scale 1:1)



Drill Drawing View (Scale 1:1)



Drill Table

Symbol	Count	Hole Size	Plated	Hole Tolerance
△	983	0.30mm	Plated	None
◇	4	0.70mm	Plated	None
◎	48	0.71mm	Plated	None
☆	320	0.85mm	Plated	None
◇	14	0.90mm	Plated	None
×	8	1.00mm	Plated	None
□	2	1.20mm	Plated	None
⊕	14	1.30mm	Plated	None
☆	4	1.45mm	Non-Plated	None
○	4	1.60mm	Plated	None
☆	4	1.91mm	Plated	None
⊞	7	3.20mm	Plated	None
1412 Total				

Layer Stack Legend

Material	Layer	Thickness	Dielectric Material	Type	Gerber
	Top Overlay			Legend	GTO
Surface Material	Top Solder	0.03mm	SM-001	Solder Mask	GTS
PbSn	Top Surface Finish	0.02mm		Surface Finish	
CF-004	Top Layer	0.03mm		Signal	GTL
Prepreg		0.13mm	PP-017	Dielectric	
Prepreg		0.13mm	PP-017	Dielectric	
CF-004	Int_top	0.03mm		Signal	G1
Core		0.71mm	Core-039	Dielectric	
CF-004	Int_bot	0.03mm		Signal	G2
Prepreg		0.13mm	PP-017	Dielectric	
Prepreg		0.13mm	PP-017	Dielectric	
CF-004	Bottom Layer	0.03mm		Signal	GBL
PbSn	Bottom Surface Finish	0.02mm		Surface Finish	
Surface Material	Bottom Solder	0.03mm	SM-001	Solder Mask	GBS
	Bottom Overlay			Legend	GBO
Total thickness: 1.46mm					